

\$319,900 - 7031 113 Street, Grande Prairie

MLS® #A2208293

\$319,900

3 Bedroom, 3.00 Bathroom, 1,229 sqft
Residential on 0.09 Acres

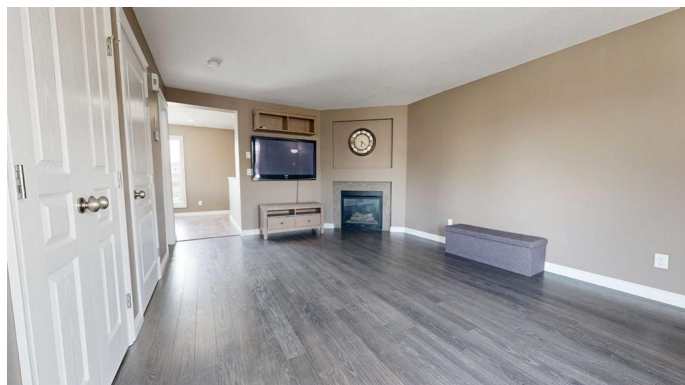
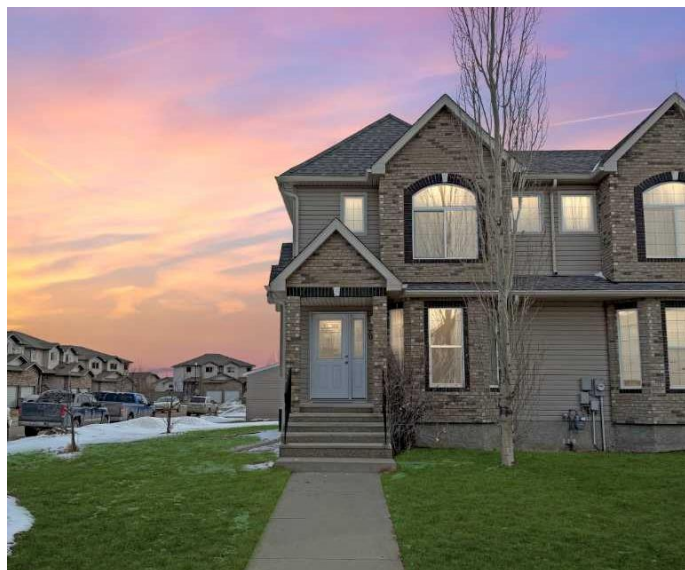
Pinnacle Ridge., Grande Prairie, Alberta

Beautiful 1,229 sq. ft. corner townhome nestled on a quiet street in Pinnacle Ridge. Step inside to brand-new laminate flooring in the bright and inviting living room, complete with a cozy gas fireplace. The kitchen offers stainless steel appliances, a gas stove, a pantry, and more. Just off the kitchen, youâ€™ll find access to the deck, offering a great view of the backyard, complete with a double-door storage shed and double-paved rear parking stalls. The main floor also features a convenient half bath. Upstairs, the primary suite features a full ensuite and a spacious closet, along with two additional bedrooms and a 3-piece bathroom. The unfinished basement is ready for your personal touch and includes rough-in plumbing, a water softener, and a new sump pump. Donâ€™t miss out on this fantastic homeâ€”book your showing today!

Built in 2011

Essential Information

MLS® #	A2208293
Price	\$319,900
Bedrooms	3
Bathrooms	3.00
Full Baths	2
Half Baths	1
Square Footage	1,229
Acres	0.09



Year Built	2011
Type	Residential
Sub-Type	Row/Townhouse
Style	2 Storey
Status	Active

Community Information

Address	7031 113 Street
Subdivision	Pinnacle Ridge.
City	Grande Prairie
County	Grande Prairie
Province	Alberta
Postal Code	T8W 0E2

Amenities

Parking Spaces	4
Parking	Parking Pad

Interior

Interior Features	Pantry, Storage, Sump Pump(s)
Appliances	Dishwasher, Refrigerator, Stove(s), Washer/Dryer, Window Coverings
Heating	Forced Air, Natural Gas
Cooling	Central Air
Fireplace	Yes
# of Fireplaces	1
Fireplaces	Gas
Has Basement	Yes
Basement	Full, Unfinished

Exterior

Exterior Features	Lighting, Storage
Lot Description	Corner Lot, Landscaped
Roof	Asphalt Shingle
Construction	Brick, Vinyl Siding
Foundation	Poured Concrete

Additional Information

Date Listed	April 3rd, 2025
Days on Market	3

Zoning RC

Listing Details

Listing Office eXp Realty

Data is supplied by Pillar 9â,,ç MLSÂ® System. Pillar 9â,,ç is the owner of the copyright in its MLSÂ® System. Data is deemed reliable but is not guaranteed accurate by Pillar 9â,,ç. The trademarks MLSÂ®, Multiple Listing ServiceÂ® and the associated logos are owned by The Canadian Real Estate Association (CREA) and identify the quality of services provided by real estate professionals who are members of CREA. Used under license.