

# \$262,500 - 252 Railway Avenue E, Drumheller

MLS® #A2207753

**\$262,500**

3 Bedroom, 1.00 Bathroom, 809 sqft  
Residential on 0.14 Acres

Downtown Drumheller, Drumheller, Alberta

3 Bedroom 1 Bathroom Bungalow ! Located on a fully fenced 50x120 lot with covered patio, single detached garage. Just a short walk to Restaurants, the shops of Downtown, Movie Theatre, Splash Park, Library and the Valleys Trail system

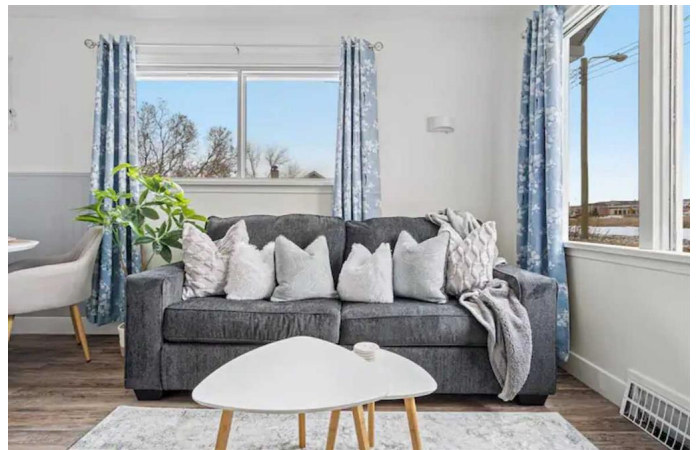
Built in 1945

## Essential Information

MLS® #	A2207753
Price	\$262,500
Bedrooms	3
Bathrooms	1.00
Full Baths	1
Square Footage	809
Acres	0.14
Year Built	1945
Type	Residential
Sub-Type	Detached
Style	Bungalow
Status	Active

## Community Information

Address	252 Railway Avenue E
Subdivision	Downtown Drumheller
City	Drumheller
County	Drumheller
Province	Alberta
Postal Code	T0J0Y4



## Amenities

Parking Spaces	1
Parking	Alley Access, Single Garage Detached
# of Garages	1

## Interior

Interior Features	No Smoking Home
Appliances	Electric Stove, Microwave, Refrigerator, Washer/Dryer, Window Coverings
Heating	Forced Air, Natural Gas
Cooling	Central Air
Has Basement	Yes
Basement	Partial, Unfinished

## Exterior

Exterior Features	Private Yard
Lot Description	Back Lane, Back Yard, Landscaped
Roof	Asphalt Shingle
Construction	Mixed
Foundation	Other, Poured Concrete

## Additional Information

Date Listed	April 1st, 2025
Days on Market	7
Zoning	ND

## Listing Details

Listing Office	RE/MAX Now
----------------	------------

Data is supplied by Pillar 9â„¢ MLSÂ® System. Pillar 9â„¢ is the owner of the copyright in its MLSÂ® System. Data is deemed reliable but is not guaranteed accurate by Pillar 9â„¢. The trademarks MLSÂ®, Multiple Listing ServiceÂ® and the associated logos are owned by The Canadian Real Estate Association (CREA) and identify the quality of services provided by real estate professionals who are members of CREA. Used under license.