

# \$799,900 - 102, 25 Beju Industrial Drive Drive, Sylvan Lake

MLS® #A2206340

**\$799,900**

0 Bedroom, 0.00 Bathroom,  
Commercial on 0.00 Acres

Beju Industrial Park, Sylvan Lake, Alberta

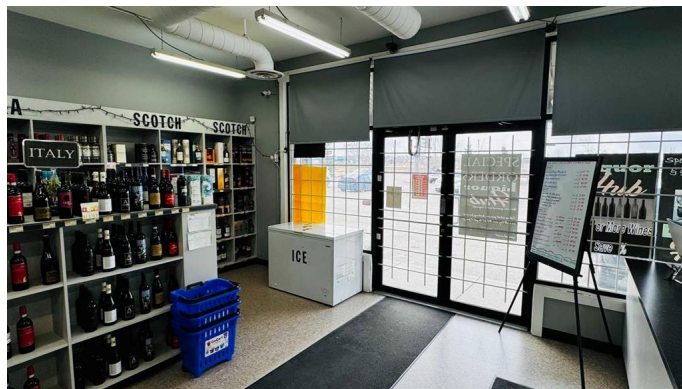
Successfull business in thriving Sylvan Lake!! This 2600 Sq Ft Industrial condominium is in an incredible location right in the heart of Sylvan Lakes industrial/ commercial area, with high volumes of traffic, and great exposure! A well established business generating consistent revenue. With an expansive lot, and rear sliding commercial door access, unloading of inventory is a breeze. Complete with ample shelving and refrigerator space, this store is as organized as it is eye appealing. A user friendly thorough camera system already installed, and potential for expanding or building the upstairs storage space. The Land, building and business are for sale. Inventory is not included in the purchase price.

Built in 2014

## Essential Information

MLS® #	A2206340
Price	\$799,900
Bathrooms	0.00
Acres	0.00
Year Built	2014
Type	Commercial
Sub-Type	Industrial
Status	Active

## Community Information



Address	102, 25 Beju Industrial Drive Drive
Subdivision	Beju Industrial Park
City	Sylvan Lake
County	Red Deer County
Province	Alberta
Postal Code	T4S 0K9

### **Interior**

Heating	Forced Air, Natural Gas
---------	-------------------------

### **Additional Information**

Date Listed	April 4th, 2025
Days on Market	17
Zoning	CH

### **Listing Details**

Listing Office	Century 21 Gillany Realty
----------------	---------------------------

Data is supplied by Pillar 9â„¢ MLSÂ® System. Pillar 9â„¢ is the owner of the copyright in its MLSÂ® System. Data is deemed reliable but is not guaranteed accurate by Pillar 9â„¢. The trademarks MLSÂ®, Multiple Listing ServiceÂ® and the associated logos are owned by The Canadian Real Estate Association (CREA) and identify the quality of services provided by real estate professionals who are members of CREA. Used under license.