

\$1,500 - A, 27 Pinnacle Crossing, Grande Prairie

MLS® #A2205054

\$1,500

2 Bedroom, 1.00 Bathroom, 799 sqft

Rental on 0.00 Acres

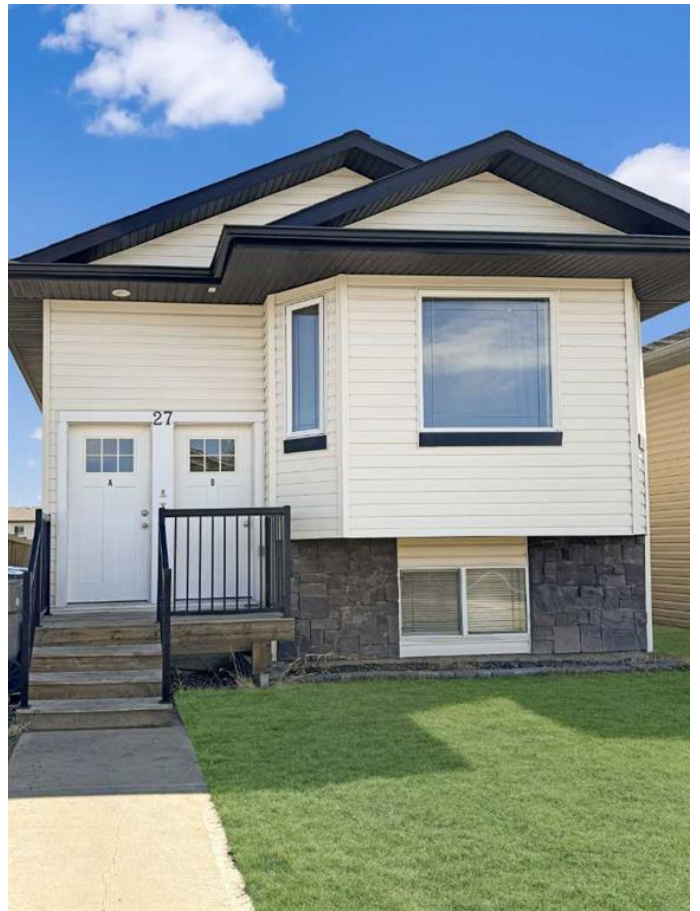
Pinnacle Ridge., Grande Prairie, Alberta

2 bed 1 bath lower suite in Pinnacle!
Open living dining space. Modern kitchen with 2 tone cabinets, tiled backsplash and stainless appliances. Large rooms on opposite ends of the unit from one another. Full 4 piece bathroom with extra cabinet space, tiled tub surround and backsplash. Access to back yard, not fenced.

Water included.

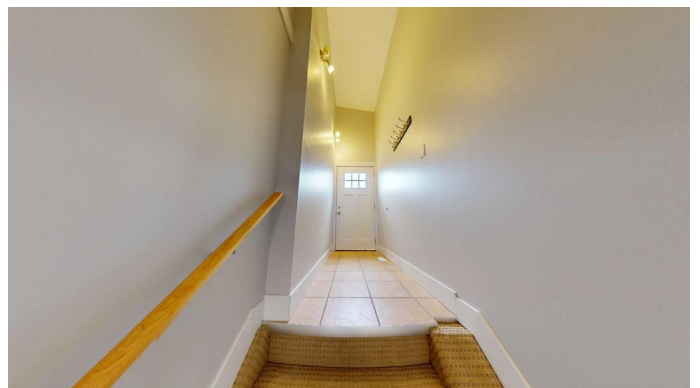
Pet Friendly with approval and \$50/mo pet fee.

Application required prior to viewing.



Essential Information

MLS® #	A2205054
Price	\$1,500
Bedrooms	2
Bathrooms	1.00
Full Baths	1
Square Footage	799
Acres	0.00
Type	Rental
Status	Active



Community Information

Address	A, 27 Pinnacle Crossing
Subdivision	Pinnacle Ridge.
City	Grande Prairie
County	Grande Prairie
Province	Alberta



Postal Code T8W0A9

Amenities

Parking Parking Pad

Interior

Appliances Dishwasher, Oven, Range Hood, Refrigerator, Stove(s), Washer/Dryer

Exterior

Roof Asphalt Shingle

Additional Information

Date Listed March 24th, 2025

Days on Market 13

Listing Details

Listing Office Grassroots Realty Group Ltd.

Data is supplied by Pillar 9â„¢ MLSÂ® System. Pillar 9â„¢ is the owner of the copyright in its MLSÂ® System. Data is deemed reliable but is not guaranteed accurate by Pillar 9â„¢. The trademarks MLSÂ®, Multiple Listing ServiceÂ® and the associated logos are owned by The Canadian Real Estate Association (CREA) and identify the quality of services provided by real estate professionals who are members of CREA. Used under license.