

\$14 - Unit 1003, 101 Highland Park Common Ne, Airdrie

MLS® #A2204359

\$14

0 Bedroom, 0.00 Bathroom,
Commercial on 0.00 Acres

East Lake Industrial, Airdrie, Alberta

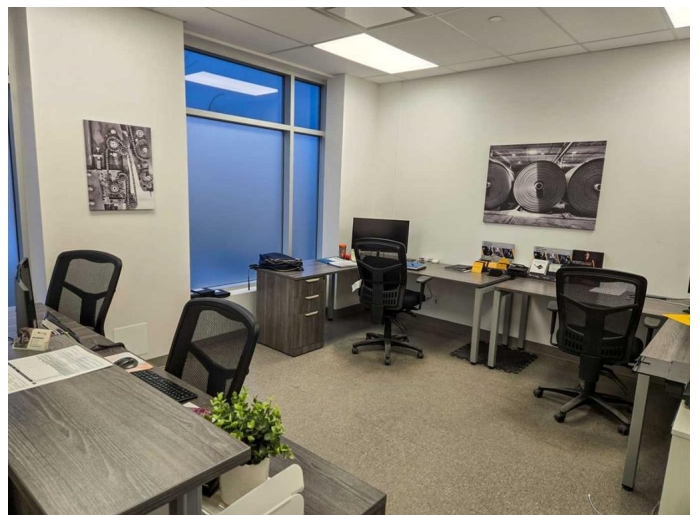
4,807 SF 'A' Class Industrial Bay in Highland Park Industrial, Airdrie. This premium industrial bay offers 4,807 SF of space, including 555 SF of open-concept office and 4,250 SF of warehouse. Features include two drive-in doors (12' W x 14' H and 8' W x 10' H), 200 Amps of power, 26' clear ceiling height, T5HO lighting, ESFR sprinklers, two skylights, and a small outdoor storage yard. The property also includes eight reserved parking stalls and is within walking distance of a large green space with a pond.

Located in Airdrie's Highland Park Industrial, developed by Beedie and awarded for excellence from the Urban Development Institute (UDI). Airdrie offers no business tax and lower property taxes than Calgary. The lease rate starts at \$13.50 PSF, with operating costs of \$4.28 (2025 est.), totaling \$17.78 PSF. The space is available with 60 days notice.

Built in 2017

Essential Information

MLS® #	A2204359
Price	\$14
Bathrooms	0.00
Acres	0.00
Year Built	2017
Type	Commercial
Sub-Type	Industrial



Status Active

Community Information

Address Unit 1003, 101 Highland Park Common Ne
Subdivision East Lake Industrial
City Airdrie
County Airdrie
Province Alberta
Postal Code T4A 0X3

Amenities

Parking Spaces 8

Additional Information

Date Listed March 20th, 2025
Days on Market 27

Listing Details

Listing Office CDN Global Advisors Ltd.

Data is supplied by Pillar 9â,,ç MLSÂ® System. Pillar 9â,,ç is the owner of the copyright in its MLSÂ® System. Data is deemed reliable but is not guaranteed accurate by Pillar 9â,,ç. The trademarks MLSÂ®, Multiple Listing ServiceÂ® and the associated logos are owned by The Canadian Real Estate Association (CREA) and identify the quality of services provided by real estate professionals who are members of CREA. Used under license.