

# \$550,000 - 112 E 300 S, Raymond

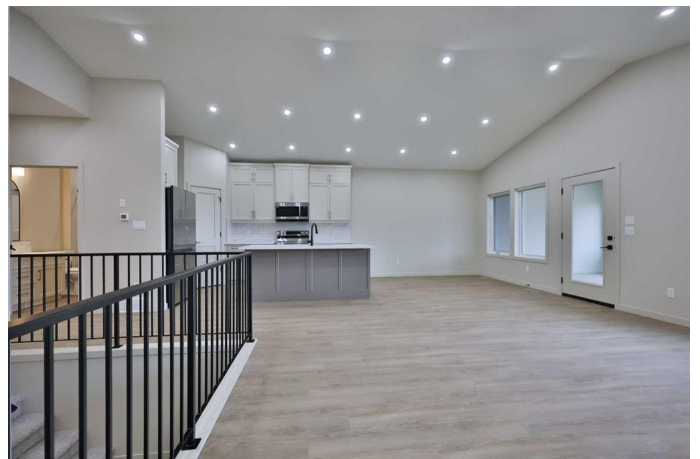
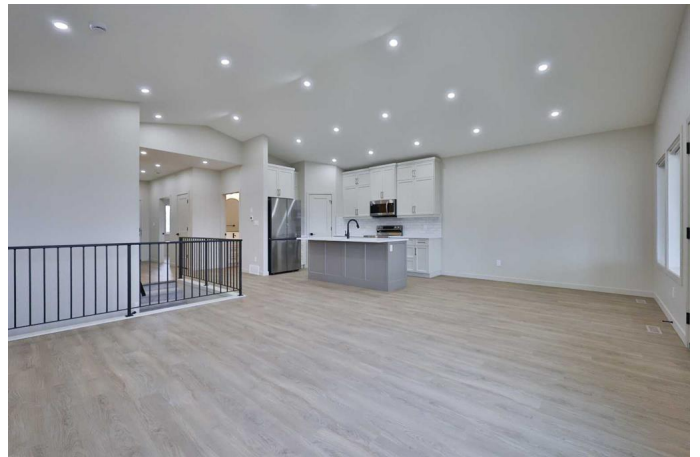
MLS® #A2202691

**\$550,000**

2 Bedroom, 2.00 Bathroom, 1,347 sqft  
Residential on 0.13 Acres

NONE, Raymond, Alberta

Welcome to this brand new, bungalow style home in the adult community of Aspen Pointe, located in the picturesque town of Raymond, just 20 minutes from Lethbridge! Here you can enjoy the tranquility of a green strip and walking path directly across the street, complete with a frisbee golf course for outdoor entertainment. This home is ideally located near Raymond's top amenities, including the golf course, The Mercantile grocery store, hospital, restaurants, and more. Inside, you'll find two spacious bedrooms on the upper level, with the option to convert the front bedroom into a large office space for your convenience. The kitchen is truly a luxury, featuring stainless steel appliances, sleek quartz countertops, a gorgeous island, and plenty of cabinetry and a pantry for storage. The open dining and living room area is perfect for entertaining or relaxing and feel grand, due to the vaulted ceiling! Step outside to the enclosed sunroom at the back of the home, where you can bask in the year-round natural light and witness the beauty of each season. The unfinished basement offers potential for customization, with the option for the builder to complete it to your preferences or act as a large storage room/blank slate for whatever you would like! The primary bedroom is a serene retreat with a stunning walk-in shower and double vanity in the ensuite bathroom. Central air conditioning and a natural gas heater in the garage ensure year-round comfort in both your home and



garage! This home combines modern living with a peaceful community settingâ€”if you are looking to downsize and find a quiet place to live donâ€™t delay! Call your REALTORÂ® and schedule a showing today!

Built in 2025

### Essential Information

MLS® #	A2202691
Price	\$550,000
Bedrooms	2
Bathrooms	2.00
Full Baths	2
Square Footage	1,347
Acres	0.13
Year Built	2025
Type	Residential
Sub-Type	Detached
Style	Bungalow
Status	Active

### Community Information

Address	112 E 300 S
Subdivision	NONE
City	Raymond
County	Warner No. 5, County of
Province	Alberta
Postal Code	T0K 2S0

### Amenities

Parking Spaces	4
Parking	Double Garage Attached
# of Garages	2

### Interior

Interior Features	Built-in Features, Storage
Appliances	Dishwasher, Refrigerator, Stove(s)
Heating	Forced Air

Cooling	Central Air
Has Basement	Yes
Basement	Full, Unfinished

### **Exterior**

Exterior Features	None
Lot Description	Standard Shaped Lot
Roof	Asphalt Shingle
Construction	Composite Siding
Foundation	Poured Concrete

### **Additional Information**

Date Listed	March 21st, 2025
Days on Market	31
Zoning	DC-1

### **Listing Details**

Listing Office	Grassroots Realty Group
----------------	-------------------------

Data is supplied by Pillar 9â„¢ MLSÂ® System. Pillar 9â„¢ is the owner of the copyright in its MLSÂ® System. Data is deemed reliable but is not guaranteed accurate by Pillar 9â„¢. The trademarks MLSÂ®, Multiple Listing ServiceÂ® and the associated logos are owned by The Canadian Real Estate Association (CREA) and identify the quality of services provided by real estate professionals who are members of CREA. Used under license.