

\$215,000 - 4078, 35468 Range Road 30, Rural Red Deer County

MLS® #A2198523

\$215,000

1 Bedroom, 1.00 Bathroom, 549 sqft
Residential on 0.06 Acres

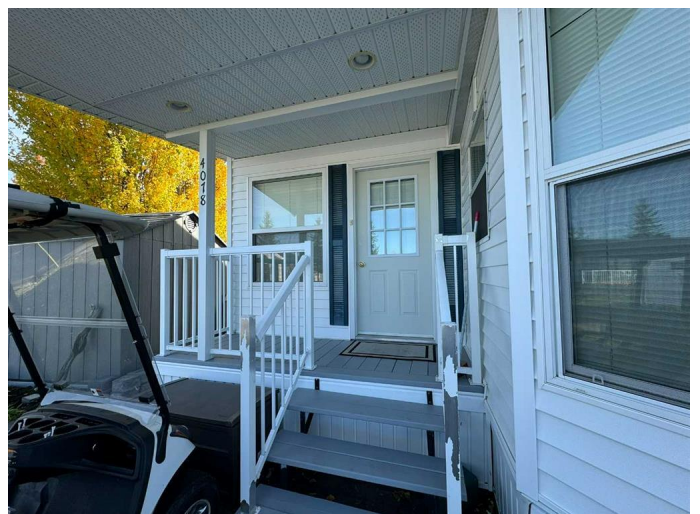
Gleniffer Lake, Rural Red Deer County,
Alberta

Discover the perfect getaway at Gleniffer Lake Resort with this stunning corner lot, backing onto a spacious park. Situated in the heart of Phase 4, this 1+ bedroom, 1-bathroom park model features a solidly built 10' x 16' addition with durable 2x6 construction.

Accommodations are flexible, with a queen-sized bed in the bedroom, a hide-a-bed in the living room, and a sofa bed in the addition—comfortably sleeping six. For extra privacy, simply pull the accordion wall across to create a temporary second bedroom in the living room.

Designed for outdoor entertaining, the property boasts a covered deck equipped with an electric hanging infrared heater, a ground-level patio, and a spacious firepit area. Enjoy alfresco dining at the wicker and glass patio set under an offset cantilever umbrella. Additional conveniences include a propane BBQ, a 3-burner camping stove, an 8' x 10' vinyl shed, and a 3' x 6' garden shed. Beautiful landscaping with perennials, an apple tree, and lush greenery enhances privacy and charm.

This turnkey retreat comes fully furnished and stocked with dishes, cutlery, cookware, window coverings, and even a newer gas lawn mower. The paved driveway easily



accommodates two vehicles and a golf cart.

Gleniffer Lake Resort offers an exceptional lifestyle with outstanding amenities, including three pools, hot tubs, a fitness center, tennis and pickleball courts, two playgrounds, and private lake access for boating, fishing, and water sports. Golf enthusiasts will appreciate the 9-hole and par 3 courses, as well as a disc golf course. The secure, gated community also features an onsite store, restaurant, boat launch, and marina. With organized events and a vibrant social scene, this resort is the perfect place to create lifelong memories and enjoy lake living now.

Built in 2002

Essential Information

MLS® #	A2198523
Price	\$215,000
Bedrooms	1
Bathrooms	1.00
Full Baths	1
Square Footage	549
Acres	0.06
Year Built	2002
Type	Residential
Sub-Type	Recreational
Style	Park Model
Status	Active

Community Information

Address	4078, 35468 Range Road 30
Subdivision	Gleniffer Lake
City	Rural Red Deer County
County	Red Deer County
Province	Alberta
Postal Code	T4G 0M3

Amenities

Amenities	Beach Access, Clubhouse, Coin Laundry, Fitness Center, Park, Parking, Playground, RV/Boat Storage, Snow Removal, Spa/Hot Tub, Storage, Trash, Visitor Parking, Boating, Dog Park, Golf Course, Indoor Pool, Outdoor Pool, Recreation Room
Parking Spaces	2
Parking	Off Street, Parking Pad

Interior

Interior Features	Ceiling Fan(s), Chandelier, Laminate Counters, No Animal Home, No Smoking Home, Skylight(s), Track Lighting, Vinyl Windows
Appliances	Electric Water Heater, Gas Stove, Microwave, Refrigerator
Heating	Forced Air, Propane
Cooling	None
Fireplace	Yes
# of Fireplaces	1
Fireplaces	Electric
Basement	None

Exterior

Exterior Features	Fire Pit, Private Yard, Barbecue
Lot Description	Back Yard, Backs on to Park/Green Space, Corner Lot, Irregular Lot, Landscaped, Lawn, Many Trees, No Neighbours Behind, Fruit Trees/Shrub(s)
Roof	Asphalt Shingle
Construction	Vinyl Siding
Foundation	Block

Additional Information

Date Listed	March 2nd, 2025
Days on Market	49
Zoning	R-7

Listing Details

Listing Office	Coldwell Banker Ontrack Realty
----------------	--------------------------------

Data is supplied by Pillar 9â„¢ MLS® System. Pillar 9â„¢ is the owner of the copyright in its MLS® System. Data is deemed reliable but is not guaranteed accurate by Pillar 9â„¢. The trademarks MLS®, Multiple Listing Service® and the associated logos are owned by The Canadian Real Estate Association (CREA) and identify the quality of services provided by real estate professionals who are members of CREA. Used under license.