

\$534,900 - 24 Clydesdale Crescent, Cochrane

MLS® #A2188453

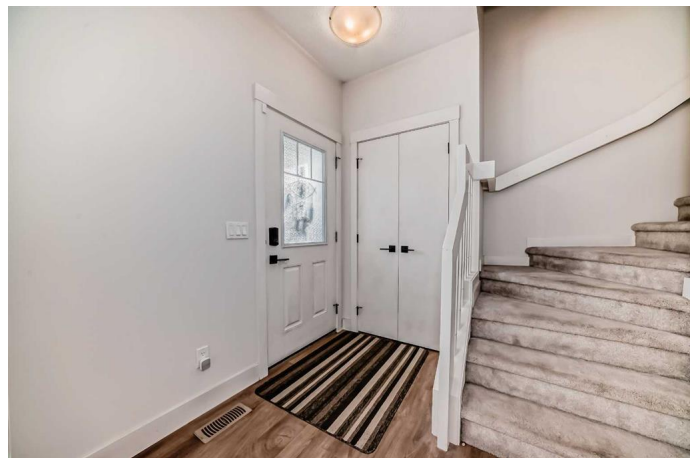
\$534,900

3 Bedroom, 3.00 Bathroom, 1,668 sqft
Residential on 0.06 Acres

Heartland, Cochrane, Alberta

Nestled in the sought-after family-friendly community of Heartland in Cochrane, this beautifully developed 1,667 sq. ft. two-storey home with a double detached garage offers space, style, and convenience. With immediate possession available, you can move right in and start enjoying the fresh, modern interior, where tasteful finishes and a bright, open floor plan create an inviting atmosphere.

The generous living room transitions effortlessly into the heart of the home—a stunning, upgraded kitchen. Featuring sleek quartz countertops, ample clean white cabinetry, and a large island with a double sink and bar seating, this kitchen is perfect for casual breakfasts or entertaining. Stainless Steel appliances complete the space, adding both functionality and style. Adjacent to the kitchen is a spacious dining nook with large, sunlit windows, offering a warm and welcoming space for family meals. From here, step outside to enjoy the sunny west-facing deck and maintenance-free backyard—perfect for outdoor gatherings. The insulated and drywalled double detached garage adds extra value and convenience. Upstairs, you'll find three generously sized bedrooms, including a large primary suite. This retreat features a walk-in closet and a luxurious 5-piece ensuite with dual sinks, a soaker tub, and a separate shower. Completing the upper level is a stylish 4-piece bathroom and a super-convenient laundry



room, thoughtfully designed to make everyday life easier. The lower level has been recently developed, offering an expansive open space that can be tailored to your family's needs—whether it's a playroom, home office, gym, or entertainment area.

Set in the welcoming community of Heartland, this home is surrounded by parks, playgrounds, and local amenities. With quick access to shopping, the majestic Rocky Mountains, and an easy commute to Calgary, plus the highly anticipated K-8 school on the horizon, this turn-key property is ready to welcome your family. Don't miss the opportunity to make this exceptional house your home—schedule a showing today!

Built in 2018

Essential Information

MLS® #	A2188453
Price	\$534,900
Bedrooms	3
Bathrooms	3.00
Full Baths	2
Half Baths	1
Square Footage	1,668
Acres	0.06
Year Built	2018
Type	Residential
Sub-Type	Semi Detached
Style	2 Storey, Side by Side
Status	Active

Community Information

Address	24 Clydesdale Crescent
Subdivision	Heartland
City	Cochrane
County	Rocky View County
Province	Alberta

Postal Code T4C 2S5

Amenities

Parking Spaces 2

Parking Double Garage Detached, Garage Door Opener

of Garages 2

Interior

Interior Features Kitchen Island, Open Floorplan, Quartz Counters

Appliances Dishwasher, Dryer, Electric Stove, Microwave Hood Fan, Refrigerator, Washer, Window Coverings

Heating Forced Air, Natural Gas

Cooling None

Has Basement Yes

Basement Finished, Full

Exterior

Exterior Features Other

Lot Description Back Lane, Back Yard

Roof Asphalt Shingle

Construction Wood Frame

Foundation Poured Concrete

Additional Information

Date Listed January 24th, 2025

Days on Market 49

Zoning R-MX

Listing Details

Listing Office RE/MAX Realty Professionals

Data is supplied by Pillar 9â„¢ MLSÂ® System. Pillar 9â„¢ is the owner of the copyright in its MLSÂ® System. Data is deemed reliable but is not guaranteed accurate by Pillar 9â„¢. The trademarks MLSÂ®, Multiple Listing ServiceÂ® and the associated logos are owned by The Canadian Real Estate Association (CREA) and identify the quality of services provided by real estate professionals who are members of CREA. Used under license.