

\$145,900 - Lot 9 Range Road 14, Rimbey

MLS® #A2187816

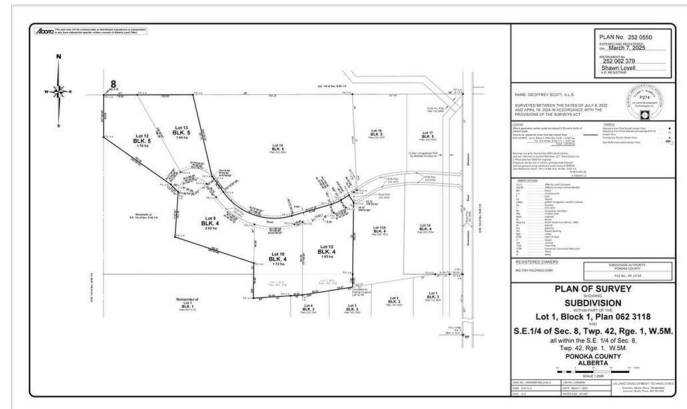
\$145,900

0 Bedroom, 0.00 Bathroom,

Land on 4.99 Acres

NONE, Rimbey, Alberta

Located just 12 minutes west of Rimbey and minutes from the shores of Gull Lake, this approved subdivision offers the perfect blend of rural tranquility and modern convenience. With a selection of stunning acreage lots to choose from, you can find the ideal setting to build your dream home. Each lot comes fully serviced, ensuring a smooth transition to your new lifestyle. The community is thoughtfully designed to maintain a high-quality living environment, with only permanent dwellings allowed.* Enjoy easy access to essential amenities, including a hospital, schools, and Tim Hortons in Rimbey, while also being just a short drive from the Gull Lake Marina and Golf Course. Once you've chosen your lot, taxes will be finalized and adjusted upon the completion of title registration. Don't miss this rare opportunity to create your perfect country retreat while staying close to everything you need! Please note that mobile homes are not permitted in this subdivision.



Essential Information

MLS® #	A2187816
Price	\$145,900
Bathrooms	0.00
Acres	4.99
Type	Land
Sub-Type	Residential Land
Status	Active

Community Information

Address	Lot 9 Range Road 14
Subdivision	NONE
City	Rimbey
County	Ponoka County
Province	Alberta
Postal Code	T0C 2J0

Additional Information

Date Listed	February 5th, 2025
Days on Market	75
Zoning	CR

Listing Details

Listing Office	Royal LePage Network Realty Corp.
----------------	-----------------------------------

Data is supplied by Pillar 9â„¢ MLSÂ® System. Pillar 9â„¢ is the owner of the copyright in its MLSÂ® System. Data is deemed reliable but is not guaranteed accurate by Pillar 9â„¢. The trademarks MLSÂ®, Multiple Listing ServiceÂ® and the associated logos are owned by The Canadian Real Estate Association (CREA) and identify the quality of services provided by real estate professionals who are members of CREA. Used under license.