

\$215,000 - 670 Center Street, Drumheller

MLS® #A2179461

\$215,000

0 Bedroom, 0.00 Bathroom,
Land on 2.05 Acres

Cambria, Drumheller, Alberta

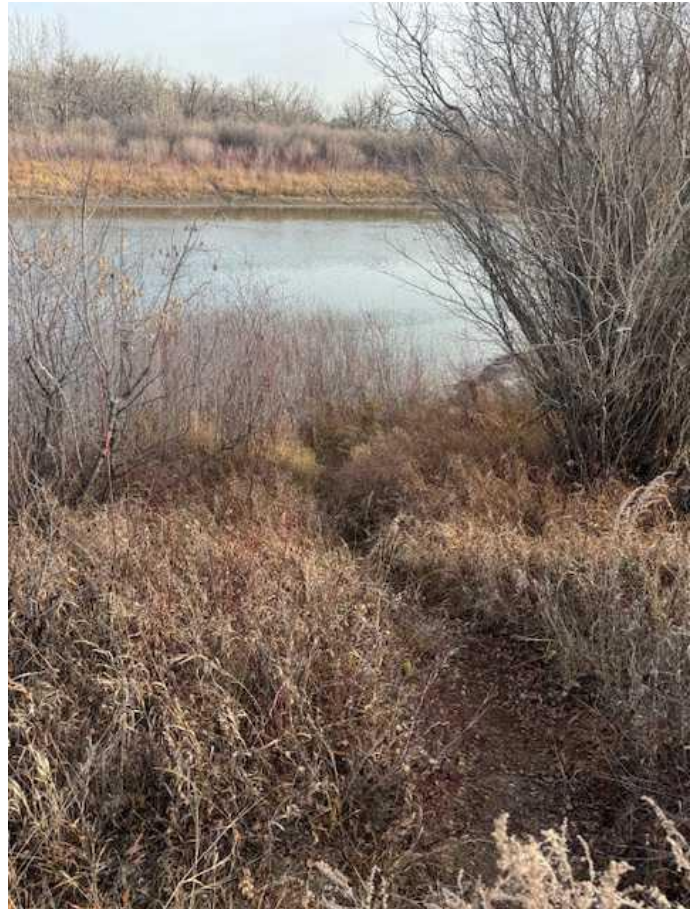
Rare opportunity to purchase river front property in the picturesque Dinosaur Valley. Only 15 minutes away from Drumheller downtown and 1:15 hour from Calgary City limits, this amazing piece of land is surrounded by beautiful views of the coulees and Hoodoos.

The opportunities for future development and profitable investment are definitely there with the neighborhood district zoning. You can choose to build your family dream home and build fun memories or subdivide and make a large profit.

Municipal water is right at the property line, and so gas and electrical. This entire community land is nested between 7 and 6 ave.

7 Avenue ends in a cul-de-sac and 6 Avenue takes you right to the river.

Another cool feature about this land is, it is part of an historical mining site with the sign on the edge of the property line.



Essential Information

MLS® #	A2179461
Price	\$215,000
Bathrooms	0.00
Acres	2.05
Type	Land
Sub-Type	Residential Land
Status	Active

Community Information

Address	670 Center Street
Subdivision	Cambria
City	Drumheller
County	Drumheller
Province	Alberta
Postal Code	T0J0Y9

Amenities

Is Waterfront	Yes
Waterfront	River Access, River Front, Se

Exterior

Exterior Features	Playground
Lot Description	Creek/River/Stream/Pond, S Lighting, Wetlands

Additional Information

Date Listed	November 15th, 2024
Days on Market	155
Zoning	Neighborhood District

Listing Details

Listing Office	Real Estate Professionals Inc.
----------------	--------------------------------

Data is supplied by Pillar 9â„¢ MLSÂ® System. Pillar 9â„¢ is the owner of the copyright in its MLSÂ® System. Data is deemed reliable but is not guaranteed accurate by Pillar 9â„¢. The trademarks MLSÂ®, Multiple Listing ServiceÂ® and the associated logos are owned by The Canadian Real Estate Association (CREA) and identify the quality of services provided by real estate professionals who are members of CREA. Used under license.

