

\$649,000 - 87 Tudor Crescent S, Lethbridge

MLS® #A2170866

\$649,000

4 Bedroom, 3.00 Bathroom, 1,852 sqft
Residential on 0.14 Acres

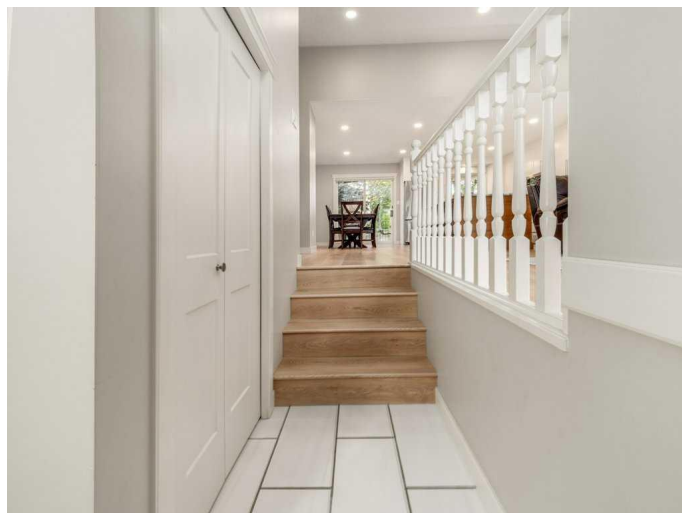
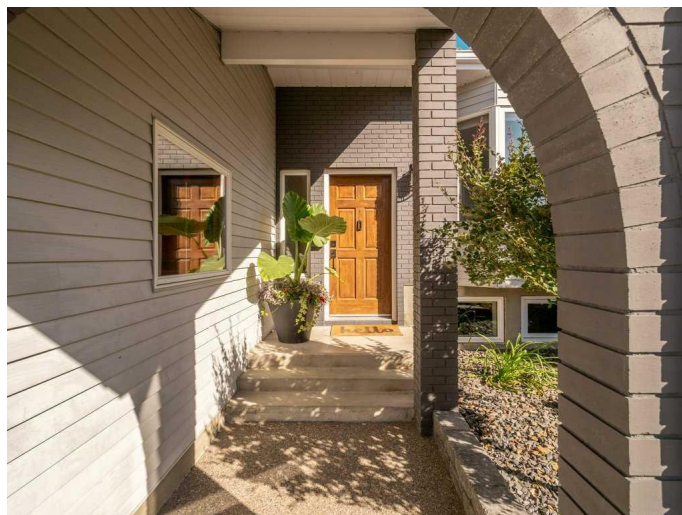
Tudor Estates, Lethbridge, Alberta

This fully renovated split-level home in Tudor Estates is conveniently located near Lethbridge College, the Enmax Centre, and major south-side retailers like Costco, Superstore, and Walmart. The home features an open-concept main floor with a new kitchen, quartz countertops, a large granite island, luxury vinyl plank flooring, and vaulted ceilings with pot lights. Upstairs, the primary bedroom includes a 3-piece ensuite, while the third level offers a cozy family room with a gas fireplace, barn door access to the laundry/half bath, and entry to the attached double garage. Outside, enjoy an east-facing deck, new sod, and underground sprinklers. Call your REALTOR® today!

Built in 1983

Essential Information

MLS® #	A2170866
Price	\$649,000
Bedrooms	4
Bathrooms	3.00
Full Baths	2
Half Baths	1
Square Footage	1,852
Acres	0.14
Year Built	1983
Type	Residential
Sub-Type	Detached



Style 4 Level Split
Status Active

Community Information

Address 87 Tudor Crescent S
Subdivision Tudor Estates
City Lethbridge
County Lethbridge
Province Alberta
Postal Code T1K 5C7

Amenities

Parking Spaces 5
Parking Double Garage Attached
of Garages 2

Interior

Interior Features Closet Organizers, Kitchen Island, Storage, Vaulted Ceiling(s), Vinyl Windows, Wood Windows, Open Floorplan, Quartz Counters, Recessed Lighting
Appliances Dishwasher, Refrigerator, Central Air Conditioner, Dryer, Electric Stove, Microwave Hood Fan, Washer
Heating Forced Air
Cooling Central Air
Fireplace Yes
of Fireplaces 1
Fireplaces Electric
Has Basement Yes
Basement Finished, Full

Exterior

Exterior Features Private Yard, Other
Lot Description Back Yard, Front Yard, Landscaped, Lawn, Level, Pie Shaped Lot
Roof Clay Tile
Construction Brick, Wood Frame, Composite Siding, Concrete
Foundation Poured Concrete

Additional Information

Date Listed October 4th, 2024
Days on Market 184

Zoning R-L

Listing Details

Listing Office 2 PERCENT REALTY

Data is supplied by Pillar 9â„¸ MLSÂ® System. Pillar 9â„¸ is the owner of the copyright in its MLSÂ® System. Data is deemed reliable but is not guaranteed accurate by Pillar 9â„¸. The trademarks MLSÂ®, Multiple Listing ServiceÂ® and the associated logos are owned by The Canadian Real Estate Association (CREA) and identify the quality of services provided by real estate professionals who are members of CREA. Used under license.