

\$649,900 - 20201 Twp Rd 460, Rural Camrose County

MLS® #A2165144

\$649,900

1 Bedroom, 1.00 Bathroom, 912 sqft
Agri-Business on 82.42 Acres

NONE, Rural Camrose County, Alberta

Beautiful Homestead Spread of 82.42 Acres on the bank, overlooking the Battle River and Dried Meat Lake. Just outside of Desirable Camrose, Alberta. Primarily pasture land with an "eco-built" Awesome Stackwood Log home completely off grid and waiting for you to add your personal touches to. Located only 10 km south of Camrose and yet very privately secluded. This 900+ Sqft One Bedroom home is a combination strawbale and cordwood (stamped engineer plans available) with massive south facing windows for passive solar gain and looking out over the amazing landscape and incredible sunsets. It has both solar and wind generation systems as well as a 8 KW Kohler back up generator powered by propane tank for electricity. There is a Osborne airtight stove as well Inslab heat from a propane fired Instant hot water system for those chilly winter nights. The instant Hot water system also does the domestic water to get your bath just the right temperature. All your the options are covered for you to homestead comfortably . A Full length Wrap around deck spans 2 sides. A "bunkhouse" off the deck and another wood storage shed form the support for a breeze-way drive through parking area. The yard is open and expansive with raised garden beds and a large perennial flower garden. Only your imagination is needed to decide what to grow on this perfectly sized HOMESTEAD. Market Gardening or Animals will thrive here in this climate. Camrose is rated the 25th city,



nationwide, desired to move to, with a university, hospital and other health care special services. It also has large shopping districts, music, theatre, art, 2 performance venues, farmers market and more.

Recreational amenities include an aquatic center, hockey, curling, skating, dance, soccer, golf, senior center, bike, hiking and cross country ski trails and more. The Edmonton airport and city are approximately 1 hour commute on good hiways.. Water Cistern and septic tank are complete and a propane tank is included. Upgrade to your hearts desire.

Built in 2012

Essential Information

MLS® #	A2165144
Price	\$649,900
Bedrooms	1
Bathrooms	1.00
Full Baths	1
Square Footage	912
Acres	82.42
Year Built	2012
Type	Agri-Business
Sub-Type	Agriculture
Style	Cottage/Cabin
Status	Active

Community Information

Address	20201 Twp Rd 460
Subdivision	NONE
City	Rural Camrose County
County	Camrose County
Province	Alberta
Postal Code	T4V 4E7

Amenities

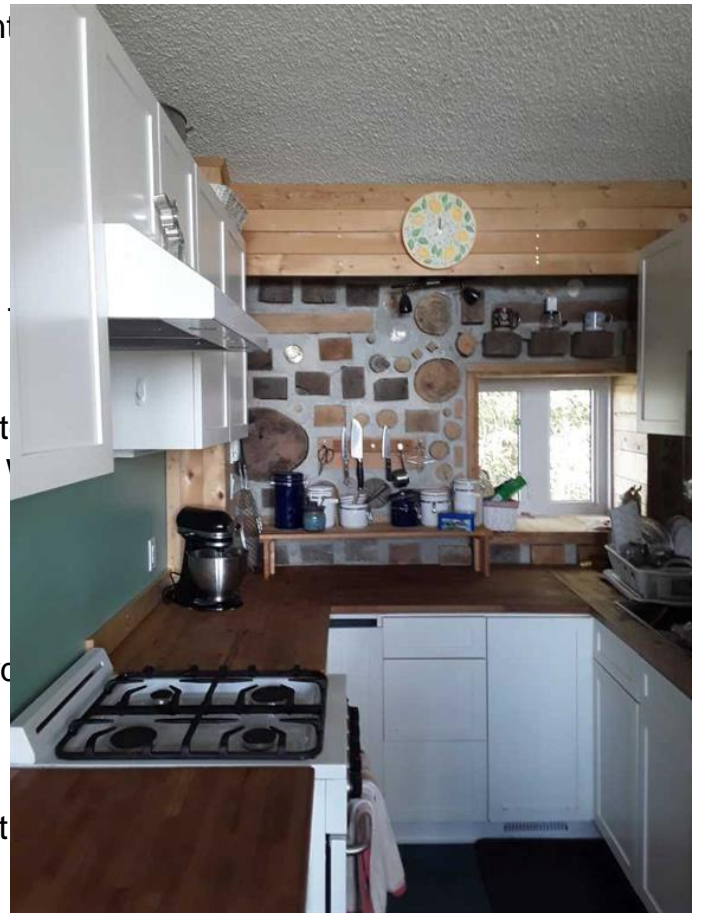
Utilities Other, Propane, Satellite Internet Connected
Parking Spaces 10
Waterfront See Remarks

Interior

Interior Features See Remarks, Soaking Tub, Walk In
Appliances Gas Stove, Refrigerator
Heating Combination, Separate Water, Water, See Remarks, Solar, Wood
Basement None

Exterior

Exterior Features Fire Pit, Garden, Private Yard, Pool
Lot Description Farm, Pasture
Roof Metal
Construction Log, Mixed, Post & Beam, Stone
Foundation Poured Concrete



Additional Information

Date Listed September 9th, 2024
Days on Market 206
Zoning Agriculture

Listing Details

Listing Office 2 Percent Realty Advantage

Data is supplied by Pillar 9â„¢ MLSÂ® System. Pillar 9â„¢ is the owner of the copyright in its MLSÂ® System. Data is deemed reliable but is not guaranteed accurate by Pillar 9â„¢. The trademarks MLSÂ®, Multiple Listing ServiceÂ® and the associated logos are owned by The Canadian Real Estate Association (CREA) and identify the quality of services provided by real estate professionals who are members of CREA. Used under license.