

\$179,900 - 5716 Evergreen Drive, High Prairie

MLS® #A2088270

\$179,900

0 Bedroom, 0.00 Bathroom,
Land on 1.52 Acres

NONE, High Prairie, Alberta

A 1.52 acre vacant - multi dwelling - building lot in the heart of High Prairie. In close proximity to the schools, Hospital and downtown this would be an ideal location for a residential subdivision or apartment buildings. All utilities at roadside. Call, email or text today to find out more.

Essential Information

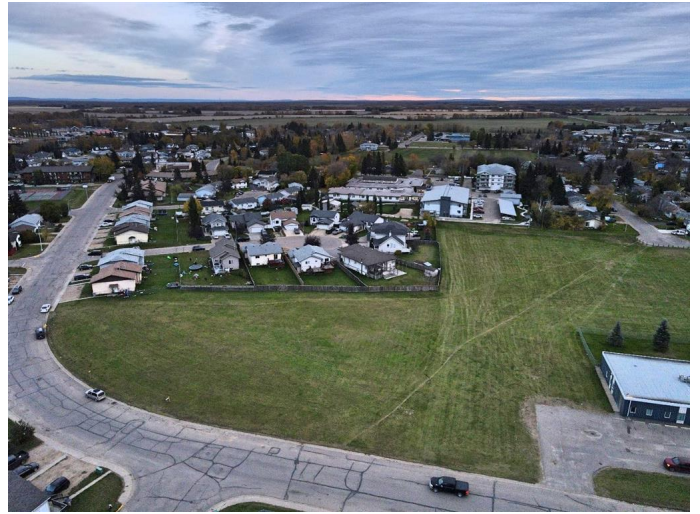
| | |
|-----------|------------------|
| MLS® # | A2088270 |
| Price | \$179,900 |
| Bathrooms | 0.00 |
| Acres | 1.52 |
| Type | Land |
| Sub-Type | Residential Land |
| Status | Active |

Community Information

| | |
|-------------|----------------------|
| Address | 5716 Evergreen Drive |
| Subdivision | NONE |
| City | High Prairie |
| County | Big Lakes County |
| Province | Alberta |
| Postal Code | T0G 1E0 |

Additional Information

| | |
|----------------|---------------------------|
| Date Listed | October 18th, 2023 |
| Days on Market | 550 |
| Zoning | Multiple Unit Residential |



Listing Details

Listing Office Grassroots Realty Group - High Prairie

Data is supplied by Pillar 9â,,ç MLSÂ® System. Pillar 9â,,ç is the owner of the copyright in its MLSÂ® System. Data is deemed reliable but is not guaranteed accurate by Pillar 9â,,ç. The trademarks MLSÂ®, Multiple Listing ServiceÂ® and the associated logos are owned by The Canadian Real Estate Association (CREA) and identify the quality of services provided by real estate professionals who are members of CREA. Used under license.