

# \$129,900 - 1780 Barton Drive Sw, Slave Lake

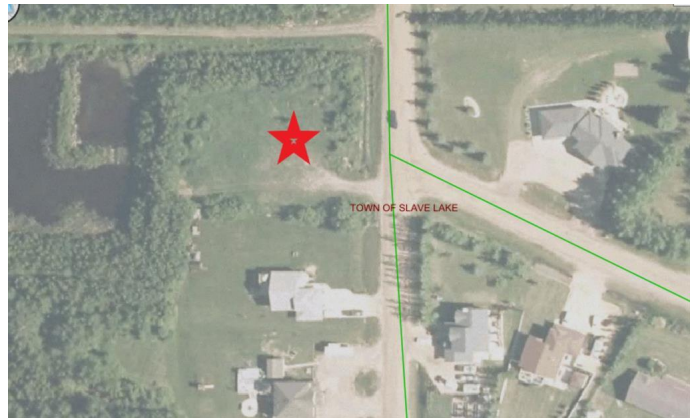
MLS® #A2057288

**\$129,900**

0 Bedroom, 0.00 Bathroom,  
Land on 0.57 Acres

NONE, Slave Lake, Alberta

A dream lot to build your dream home! This 0.5 acre lot is perfectly located on the edge of town, has a pond behind it that is great for ice skating in the winter and only one neighbour! The lot is ready for you - don't delay!



## Essential Information

MLS® #	A2057288
Price	\$129,900
Bathrooms	0.00
Acres	0.57
Type	Land
Sub-Type	Residential Land
Status	Active

## Community Information

Address	1780 Barton Drive Sw
Subdivision	NONE
City	Slave Lake
County	Lesser Slave River No. 124, M.D. of
Province	Alberta
Postal Code	T0G 2A4

## Additional Information

Date Listed	June 10th, 2023
Days on Market	664
Zoning	R1C

## Listing Details

Listing Office

ROYAL LEPAGE PROGRESSIVE REALTY

Data is supplied by Pillar 9â„¸ MLSÂ® System. Pillar 9â„¸ is the owner of the copyright in its MLSÂ® System. Data is deemed reliable but is not guaranteed accurate by Pillar 9â„¸. The trademarks MLSÂ®, Multiple Listing ServiceÂ® and the associated logos are owned by The Canadian Real Estate Association (CREA) and identify the quality of services provided by real estate professionals who are members of CREA. Used under license.