

\$615,000 - 75 Range Road, Rural Grande Prairie No. 1, County of

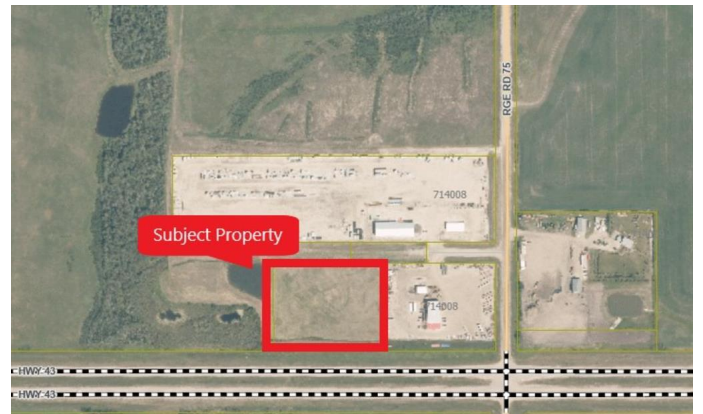
MLS® #A2028031

\$615,000

0 Bedroom, 0.00 Bathroom,
Land on 5.86 Acres

NONE, Rural Grande Prairie No. 1, County of,
Alberta

This prime 5.86-acre commercial lot is strategically located just East of Grande Prairie off of RR 75 with direct frontage onto Highway 43. Situated in the County, this lot is zoned RM-2, with access to gas, power, and Telus high-speed internet. With an asking price of \$105,000 per acre, this well-sloped lot offers incredible exposure, which is sure to elevate your company's profile and visibility. As one of the busiest highways in the region, Highway 43 guarantees a steady flow of traffic that could translate into potential customers for your Business. To view call your Commercial Realtor® today.



Essential Information

| | |
|-----------|-----------------|
| MLS® # | A2028031 |
| Price | \$615,000 |
| Bathrooms | 0.00 |
| Acres | 5.86 |
| Type | Land |
| Sub-Type | Commercial Land |
| Status | Active |

Community Information

| | |
|-------------|---------------------------------------|
| Address | 75 Range Road |
| Subdivision | NONE |
| City | Rural Grande Prairie No. 1, County of |

| | |
|-------------|---------------------------------|
| County | Grande Prairie No. 1, County of |
| Province | Alberta |
| Postal Code | T0H 3S0 |

Additional Information

| | |
|----------------|---------------------|
| Date Listed | February 27th, 2023 |
| Days on Market | 768 |
| Zoning | RM-2 |

Listing Details

| | |
|----------------|-----------------------|
| Listing Office | RE/MAX Grande Prairie |
|----------------|-----------------------|

Data is supplied by Pillar 9â„¢ MLSÂ® System. Pillar 9â„¢ is the owner of the copyright in its MLSÂ® System. Data is deemed reliable but is not guaranteed accurate by Pillar 9â„¢. The trademarks MLSÂ®, Multiple Listing ServiceÂ® and the associated logos are owned by The Canadian Real Estate Association (CREA) and identify the quality of services provided by real estate professionals who are members of CREA. Used under license.